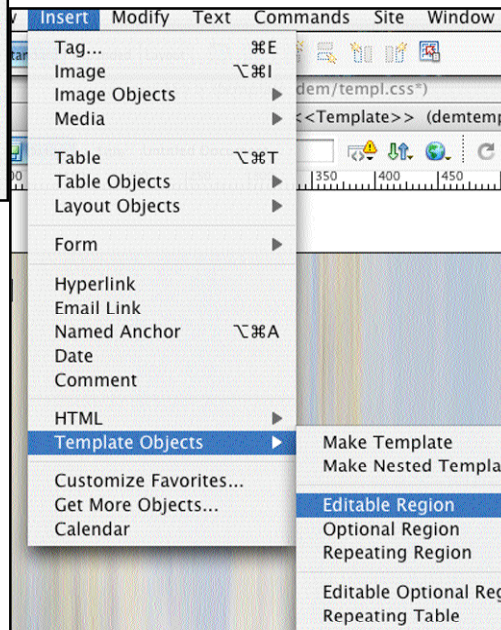
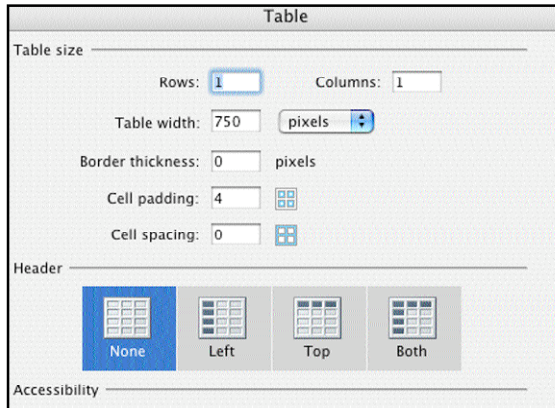
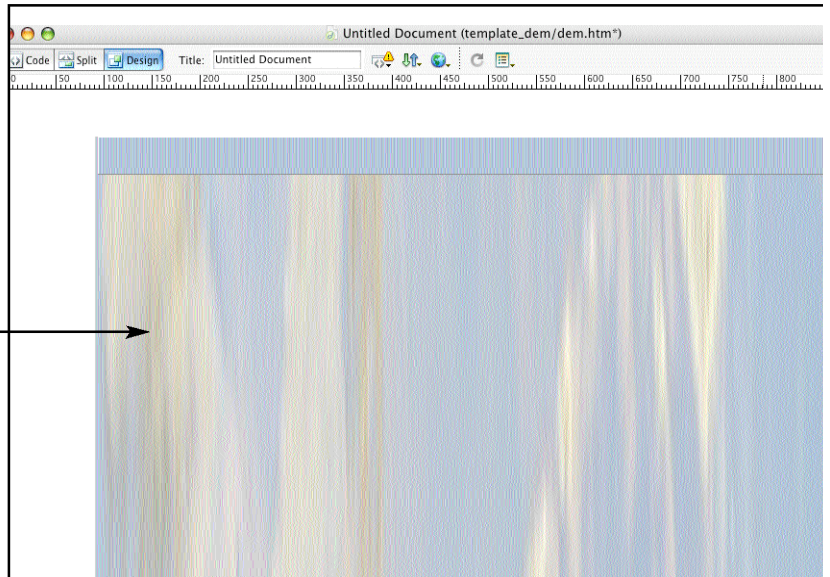
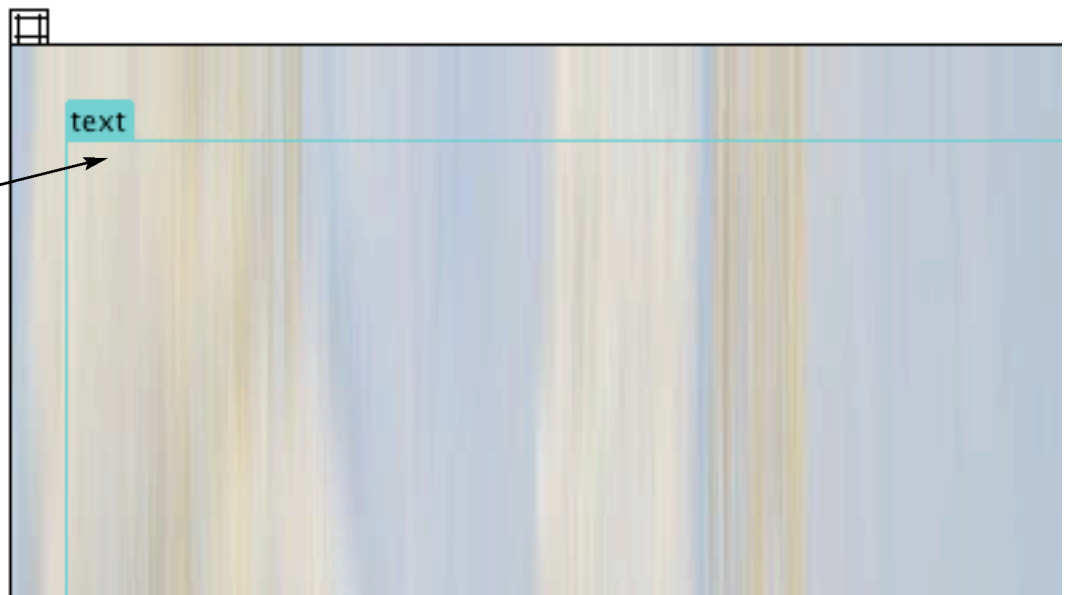


Creating Templates

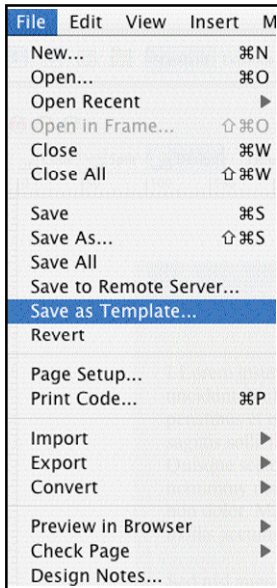
Create your page and insert a table(s) to hold the content you would like to make editable.



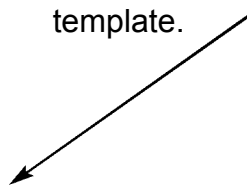
Make sure you have clicked on the table you just inserted, then go to INSERT-TEMPLATE OBJECT-EDITABLE REGION. This will change the table to allow your client to edit what you put inside. Everything else will be locked.



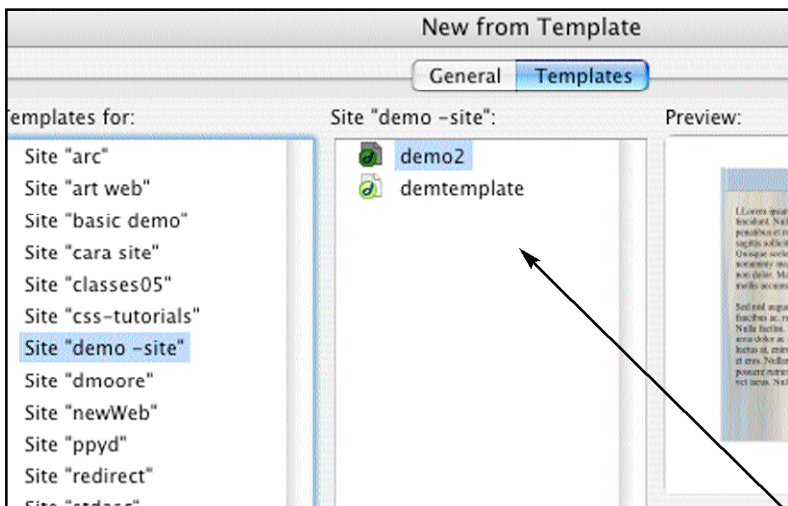
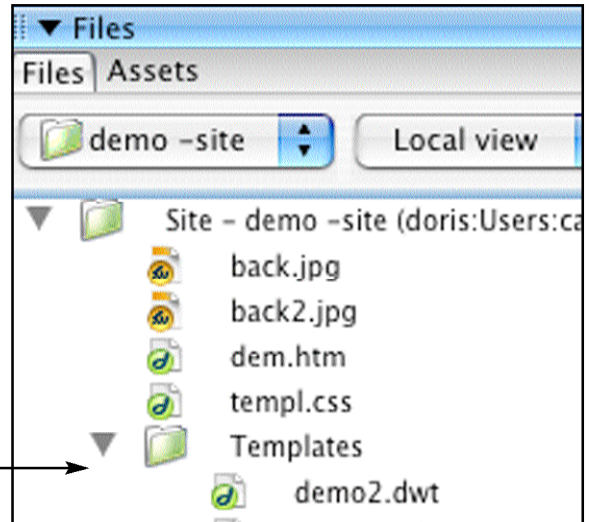
(Editable region)



Once you've created your page and set all editable regions, you will need to save this page as a template.



Dreamweaver will create a Template folder for you and will place the .dwt (Dreamweaver template file) in that folder. Do not move these! Otherwise, you will break the link to the pages based on these templates.



To create a web page BASED on this template, you need to go to create- TEMPLATES, Navigate to your site and choose the template you wish your page to be based on. This will create an **htm page** which has all elements locked EXCEPT the areas you've labeled as editable. This is a great way to protect your designs from clients accidentally moving elements you don't want moved! If you are working with a client, you **MUST** use templates unless otherwise ok'd by me.