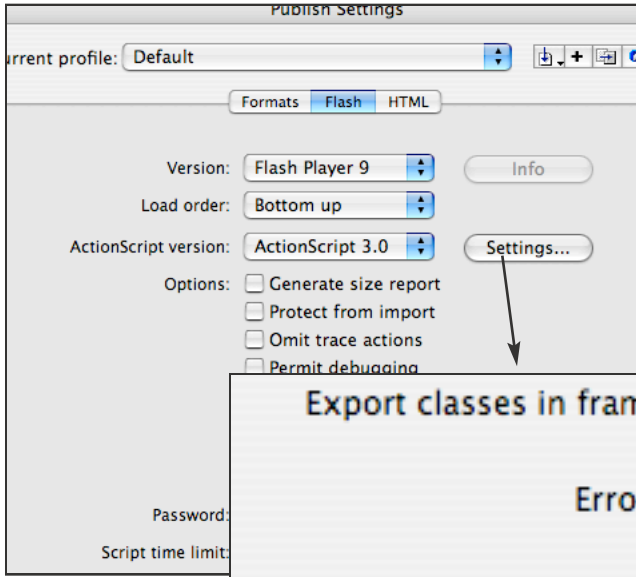
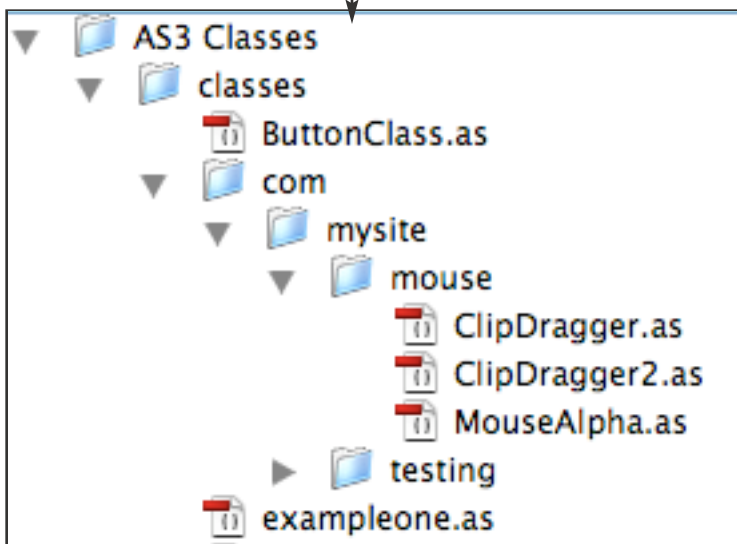
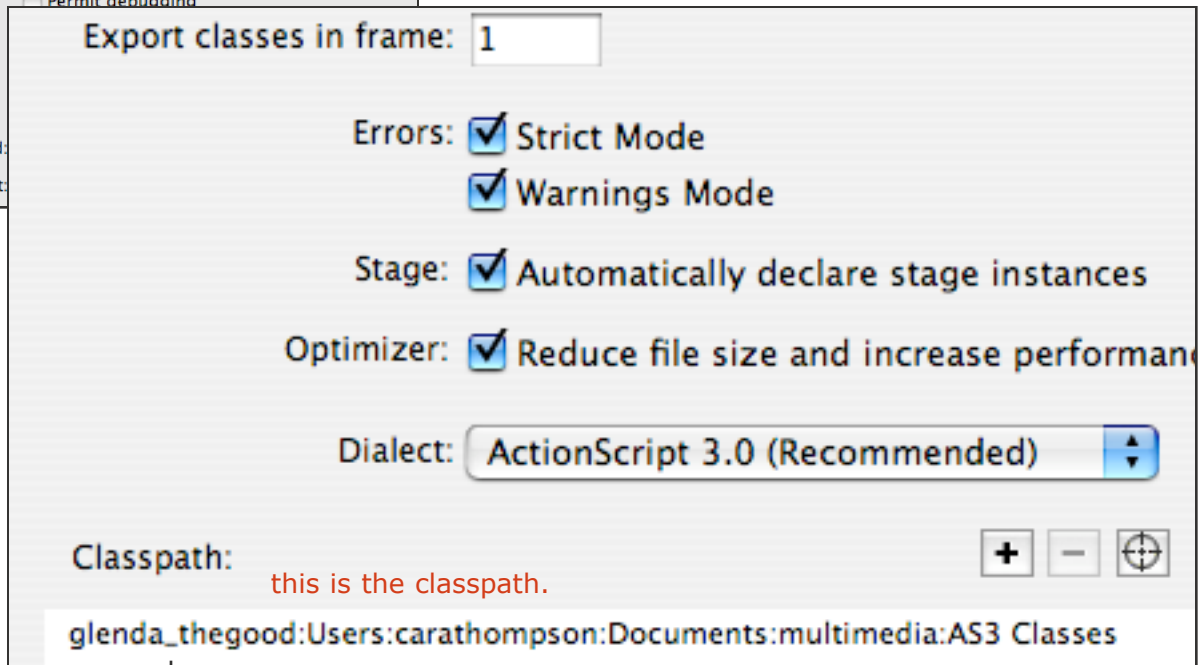


Setting classpaths



Unless your class is in the same directory as your FLA file, you need to set up a classpath in PUBLISH SETTINGS.



The class path should point to the main directory holding your classes. It makes sense to place these in one place (away from your FLA file) so you can use them again and again if you want to.

Here, I've placed my classes in directories which mirror the name of the website I am working on. This is a convention used when working on large sites with multiple developers. It's not necessary on smaller projects.

You will also need to reference this in your package name (see next page).

